



RV7500

The Caliber® RV7500 relief valve was designed for today's high-pressure drilling conditions. The valve utilizes a pin buckling system to determine the relief pressure. Each pin is designed to deform when the pressure reaches a predetermined load. All pins go through a stringent quality control process and batch testing to ensure performance at the correct pressure rating.

BENEFITS

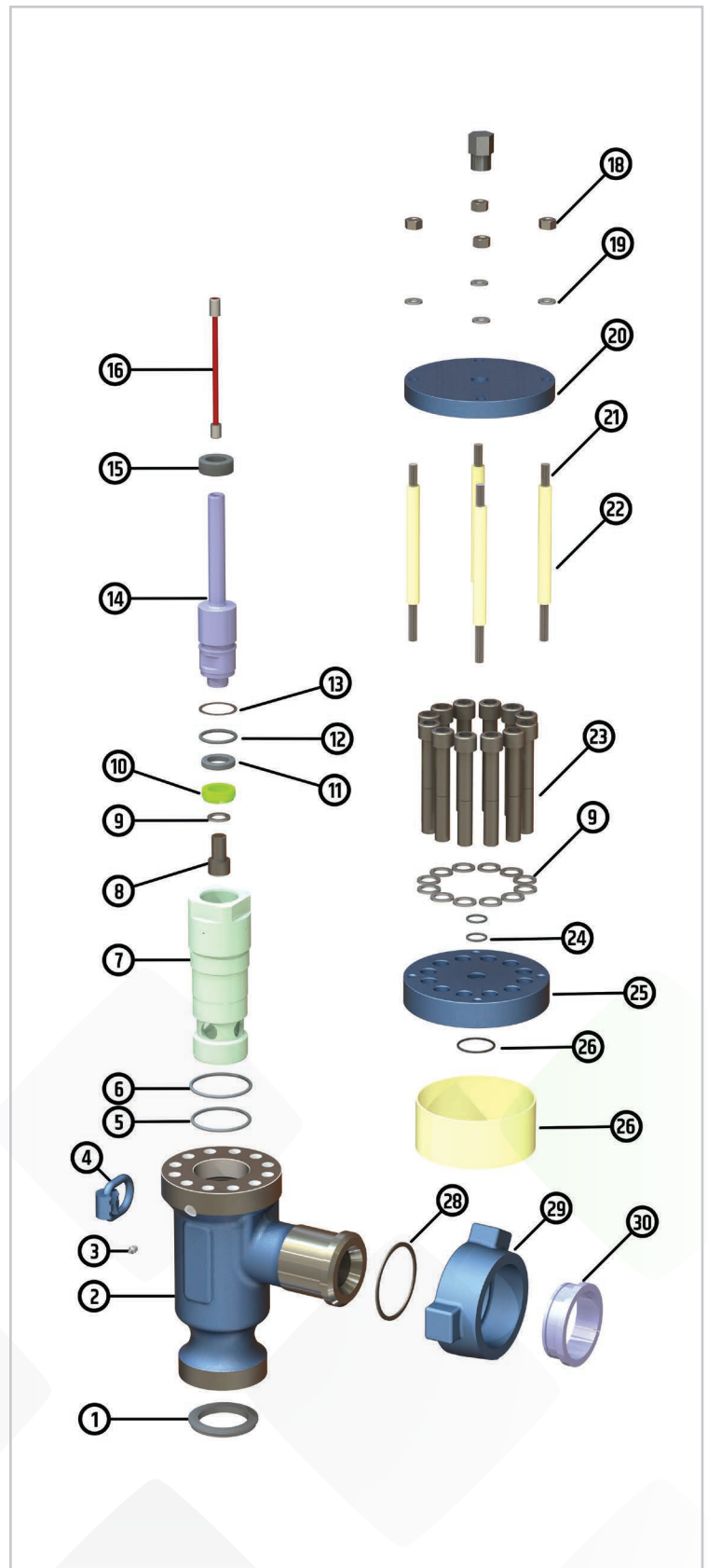
- ◆ Pressure ranges from 1,000 to 10,000 psi
- ◆ Once the pin deforms, pressure is released within milliseconds
- ◆ Seat and piston are stainless steel for longer life
- ◆ Field repairable
- ◆ Easily change the pressure rating by switching pins
- ◆ Pins are color coded to industry standards
- ◆ 1502 hammer union connections
- ◆ Relieves pressure to prevent costly damage to pumps, hoses and mud systems

Part Number	Description
508-0201	RV7500 Relief Valve
508-0350	RV7500 Minor Repair Kit
508-0102	RV7500 Seal Kit

Caliber RV7500

Item	Part No.	Description	Qty
1	503-0127	Thread Seal, 1502 Union 3"	1
2	508-0301	Body, Integral 1502 Ends AISI 4130	1
3	601-0009	Grease Fitting 1/8 NPT	1
4	601-0235	Lifting Lug	1
5	3F9-2339	O-Ring 2-339 Viton 90 Duro	1
6	3F9-2340	O-Ring 2-340 Viton 90 Duro	1
7	508-0210	Seat Cage	1
8	205-1475	Piston Bolt 7/8-9 X 1-1/2 SHCS	1
9	601-0233	Lock Washer 7/8"	13
10	508-0220	Seal Retainer	1
11	508-0255	Main Seal HNBR	1
12	3F9-2328	O-Ring 2-328 Viton 90 Duro	1
13	301-0011	Backup Seal 2-328 PTFE	1
14	508-0215	Piston	1
15	508-0260	Bumper Urethane 8901	1
16	Varies	Buckling Pin 304 SS (See Chart Below)	1
17	508-0240	Holding Nut	1
18	209-007	Hex Nut 1/2-13	4
19	601-0234	Lock Washer 1/2"	4
20	508-0235	Top Plate	1
21	508-0245	Post 1/2-13 All Thread	4
22	508-0250	Spacer	4
23	205-1501	Bonnet Bolt 7/8-9 X 4-3/4 SHCS	12
24	3F9-2214	O-Ring 2-214 Viton 90 Duro	2
25	508-0225	Bonnet	1
26	3F9-2226	O-Ring 2-226 Viton 90 Duro	1
27	508-0230	Sleeve	1
28	503-0128	Retaining Ring, WS-450	1
29	503-0121	Wing Nut, 1502 Union 3"	1
30	503-0120	Segments, 1502 Union 3"	1

Pin Pressure	Pin Color	Part/Drawing No. for Pin
2500 PSI	Gray	508-0265
3000 PSI	Gold	508-0267
3500 PSI	Black	508-0269
4000 PSI	Dark Blue	508-0271
4500 PSI	Orange	508-0273
5000 PSI	Dark Green	508-0275
5500 PSI	Yellow	508-0277
6000 PSI	Red	508-0279
6500 PSI	Lt Blue	508-0281
7000 PSI	Tan	508-0283
7500 PSI	Pink	508-0285



Premium Oilfield
Technologies
Q1-3977

Premium Oilfield Technologies
10600 W. Sam Houston Pkwy North
Houston, Texas 77064
281.670.5200 ♦ premiumoilfield.com