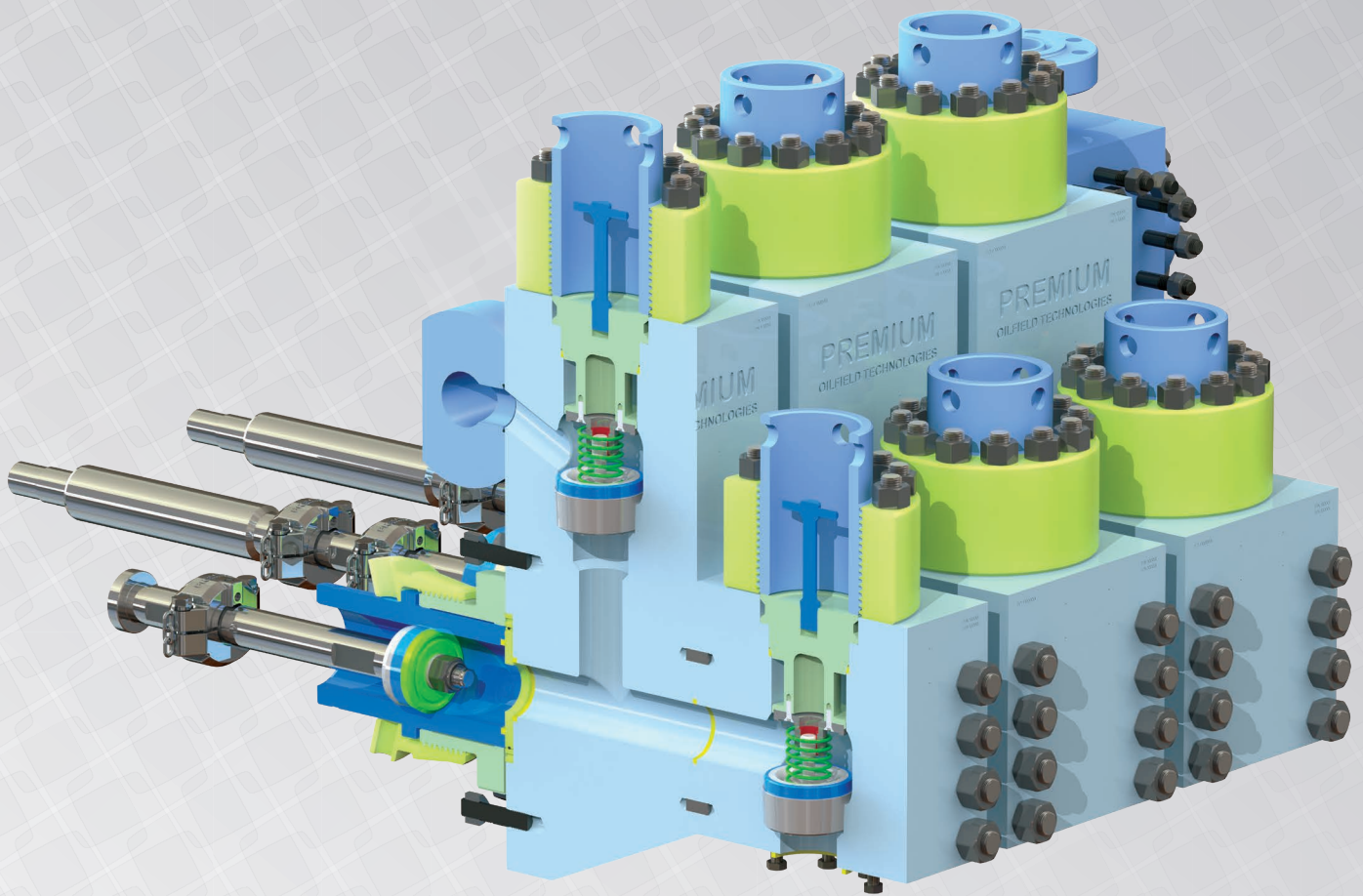


CALIBER[®]

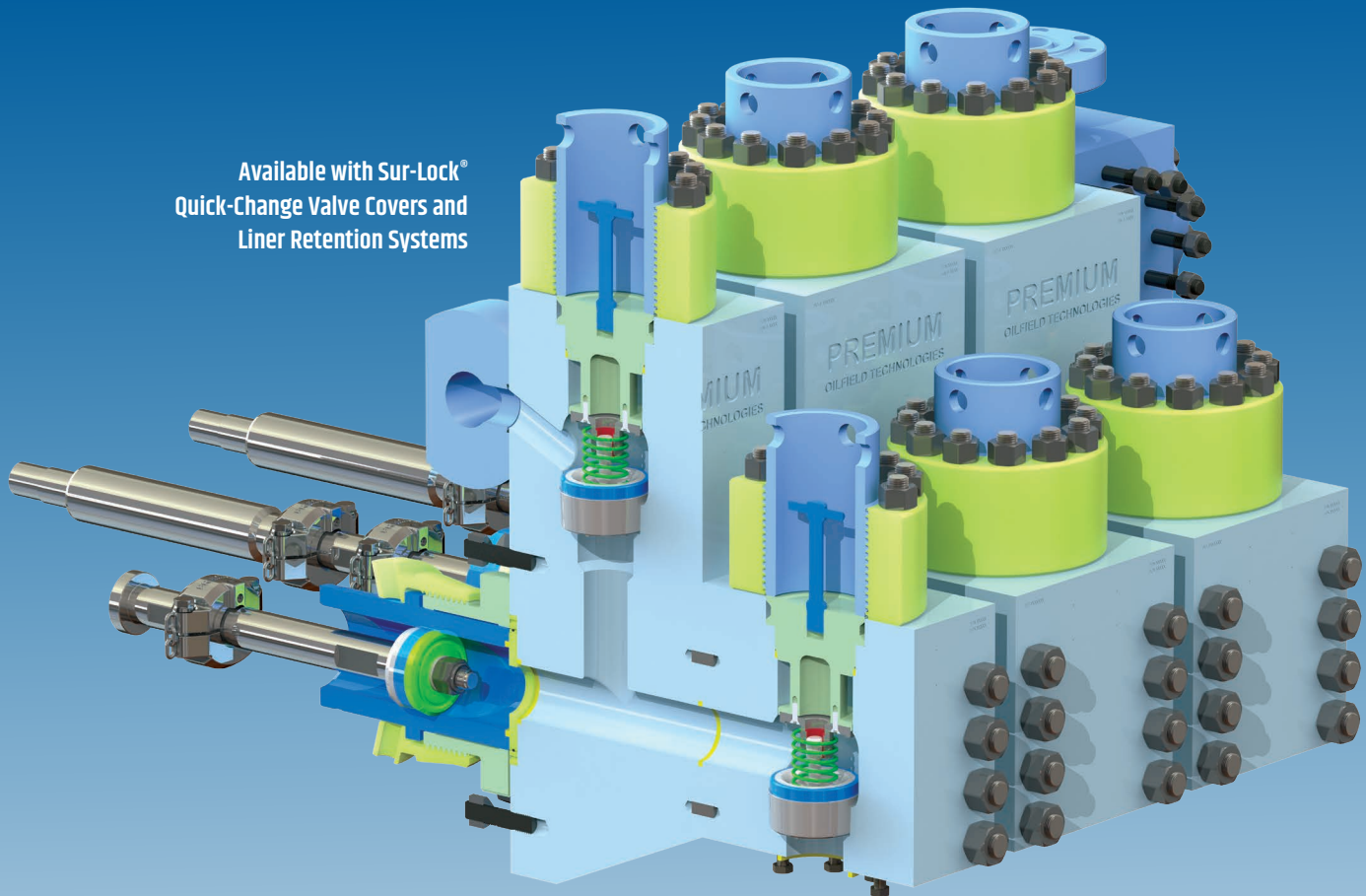
MXL-7500




PREMIUM[®]
Oilfield Technologies

Premium Oilfield Technologies offers a complete line of fluid end modules and components that are manufactured to OEM specifications and interchangeability. We offer 7500 psi designs for all major pump configurations. **Our Caliber® modules start with high-tensile strength steel and are machined to precise engineering tolerances.** Each forging is machined and heat treated to maintain the best physical properties inside the module and on the surface, thus minimizing washing and stress cracking.

Available with Sur-Lock®
Quick-Change Valve Covers and
Liner Retention Systems



Caliber® MXL-7500 2-Piece Design

12-P-160 Compatible Fluid End Modules

The 2-piece 7500 psi fluid end module for the 12-P-160 pumps is based on industry-standard design and is 100% compatible with parts from the OEM and other manufacturers.

EXPENDABLES AND PERFORMANCE

Size (inches)	Liners		Liner Gaskets	
	Caliber® Steel Liner	Patriot® Zirconia Liner	Nitrile Rubber	Urethane
4"	100-51C40-00	101-51Z40-00	202-50N50-00	202-50U50-00
4-1/2"	100-51C44-00	101-51Z44-00	202-50N50-00	202-50U50-00
5"	100-51C50-00	101-51Z50-00	202-50N50-00	202-50U50-00
5-1/2"	100-51C54-00	101-51Z54-00	202-50N54-00	202-50U54-00
6"	100-51C60-00	101-51Z60-00	202-50N60-00	202-50U60-00
6-1/2"	100-51C64-00	101-51Z64-00	202-50N64-00	202-50U64-00
7"	100-51C70-00	101-51Z70-00	202-50N70-00	202-50U70-00

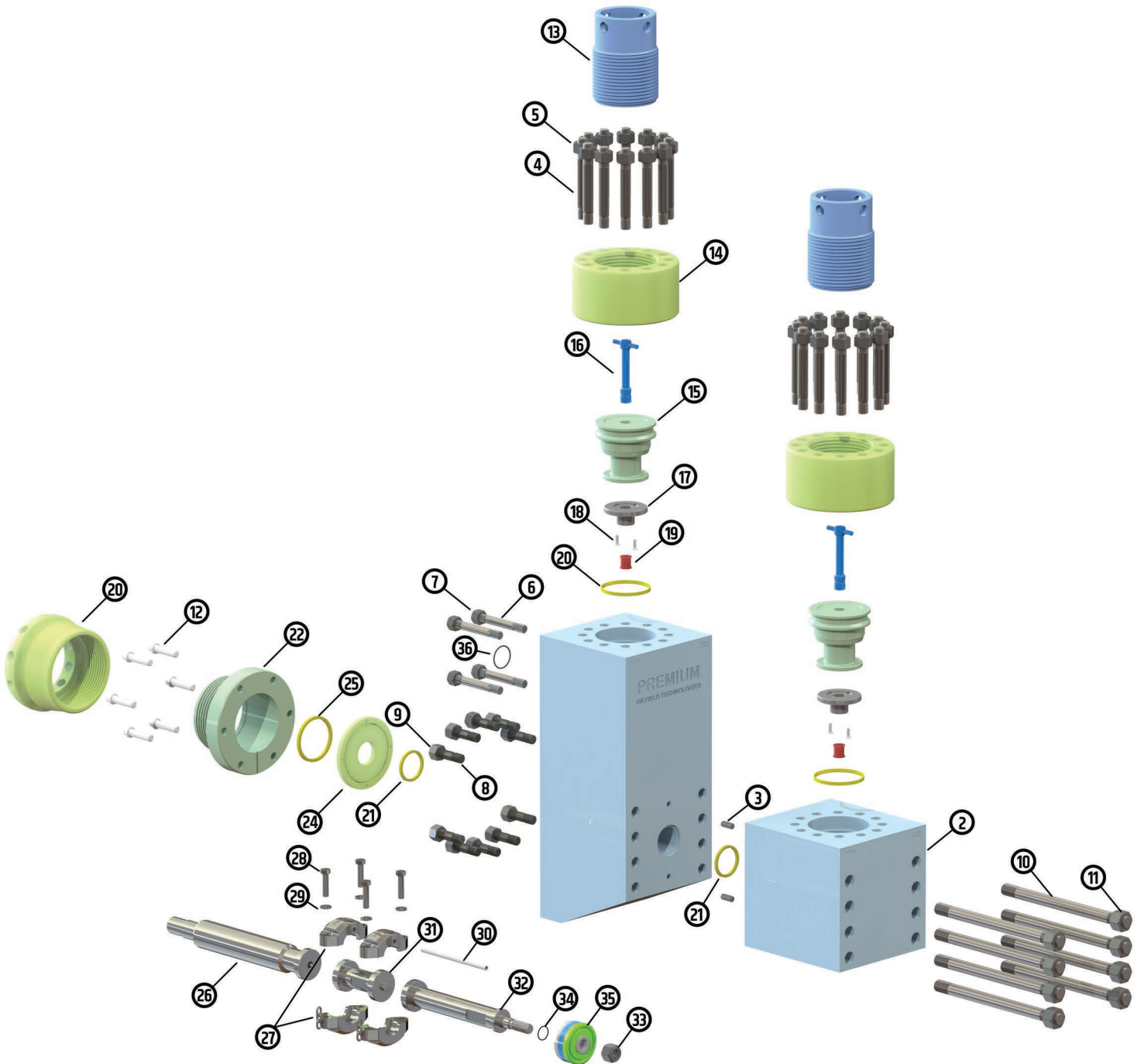
¼" sizes available on request

7,500 PSI Operating Pressure		Strokes Per Min.	120	110	100	90	80	70	60	50	40
12" STROKE		Input HP	1600	1467	1333	1200	1067	933	800	667	533
Piston Size	Discharge Pressure Rating	Output Gal/Rev	OUTPUT - Gallons Per Minute (L/min)*								
7 1/2"	2,987	6.885	826 (3127)	757 (2867)	689 (2606)	620 (2345)	551 (2085)	482 (1824)	413 (1564)	344 (1303)	275 (1042)
7 1/4"	3,197	6.434	772 (2922)	708 (2679)	643 (2435)	579 (2192)	515 (1948)	450 (1705)	386 (1461)	322 (1218)	257 (974)
7"	3,429	5.998	720 (2724)	660 (2497)	600 (2270)	540 (2043)	480 (1816)	420 (1589)	360 (1362)	300 (1135)	240 (908)
6 3/4"	3,977	5.577	669 (2533)	613 (2322)	558 (2111)	502 (1900)	446 (1689)	390 (1478)	335 (1267)	279 (1055)	223 (844)
6 1/2"	4,302	5.171	621 (2349)	569 (2153)	517 (1957)	465 (1762)	414 (1566)	362 (1370)	310 (1174)	259 (979)	207 (783)
6 1/4"	4,668	4.781	574 (2172)	526 (1991)	478 (1810)	430 (1629)	383 (1448)	335 (1267)	287 (1086)	239 (905)	191 (724)
6"	5,082	4.406	529 (2001)	485 (1835)	441 (1668)	397 (1501)	353 (1334)	308 (1167)	264 (1001)	220 (834)	176 (667)
5 3/4"	5,555	4.047	486 (1838)	445 (1685)	405 (1532)	364 (1379)	324 (1225)	283 (1072)	243 (919)	202 (766)	162 (613)
5 1/2"	6,097	3.703	444 (1682)	407 (1542)	370 (1401)	333 (1261)	296 (1121)	259 (981)	222 (841)	185 (701)	148 (561)
7 1/4"	6,722	3.374	405 (1532)	371 (1405)	337 (1277)	304 (1149)	270 (1022)	236 (894)	202 (766)	169 (638)	135 (511)
5"	7,448	3.060	367 (1390)	337 (1274)	306 (1158)	275 (1042)	245 (927)	214 (811)	184 (695)	153 (579)	122 (463)
4 3/4"	7,500	2.762	331 (1254)	304 (1150)	276 (1045)	249 (941)	221 (836)	193 (732)	166 (627)	138 (523)	110 (418)
4 1/2"	7,500	2.479	297 (1126)	273 (1032)	248 (938)	223 (844)	198 (751)	174 (657)	149 (563)	124 (469)	99 (375)
4 1/4"	7,500	2.211	265 (1004)	243 (920)	221 (837)	199 (753)	177 (669)	155 (586)	133 (502)	111 (418)	88 (335)
4"	7,500	1.958	235 (890)	215 (815)	196 (741)	176 (667)	157 (593)	137 (519)	118 (445)	98 (371)	78 (297)

7-1/2" Liner only available in Flame Hardened Material

*Based on 100% volumetric efficiency and 90% mechanical efficiency

OEM STYLE MODULE COMPONENTS



MODULE COMPONENTS

Item No.	Part Number	OEM Part Number	Part Description	Torque Ft. Lbs.	Qty. Per Pump
	140-51M75-00		Fluid End Assembly (3-Module Assemblies, 1-Discharge Manifold, Studs, Nuts & Gaskets)		
	142-51M75-00	80704032	Module Assembly Complete With Accessories (Items 1 - 24)		
	145-51M75-00	80704000	Module, Discharge (Studded) (Includes Items 4 - 12)		3
1	145-51M75-01		Module, Discharge (Unstudded)		3
	144-51M75-00	80704001	Module, Suction (Studded) (Includes Items 4 & 5)		3
2	144-51M75-01		Module, Suction (Unstudded)		3
3	170-07A09-05	6511416	Dowel Pin .875 X 2.00 LG		6
4	170-14A06-22S	80700014	Stud - 1.500-6 X 12.00LG	1630	72
5	170-14A06-00	6300240	Nut - 1.500-6 Heavy Hex		72
6	170-12A08-18S	80702011	Stud - 1.250-8un X 10.50LG	890	12
7	170-12A08-00	7601-0630-24	Nut - 1.250-8un Heavy Hex		12
8	170-13A06-10S	2408029	Stud - 1.375-6unc X 6.25LG	1775	30
9	170-13A06-00	6300220	Nut - 1.375-6unc Heavy Hex		30
10	170-16A08-17S	80704002	Stud - 1.750-8un X 24.000LG	2650	24
11	170-16A08-00	6300821	Nut - 1.750-8un Heavy Hex		24
12	170-11B07-06	PEP75	12pt Capscrew, 1.125-7unc X 4.0" LG	1050	18
13	152-51M75-00	80704004	Screw Gland		6
14	151-51M75-00	80704003	Threaded Ring		6
	153-51M75-00		Valve Cover Assembly (Includes Items 15 - 19)		6
15	627-0082	80704005	Valve Cover		6
16	627-0196		T-Handle		6
	154-51S00-00		Valve Guide Assembly (Includes Items 17 - 19)		6
17	154-51S00-01	12PVGASWNS	Valve Guide		6
18	170-04B13-07	7007303	FHCS, 1/2-13 X 1.500 LG		12
19	206-44U07-00	OWVGI	Insert, Valve Guide		6
20	204-01U19-00	7207129	Seal, Valve Cover, Urethane		6
21	202-00U88-00	1290344	Seal, Module/Wear Plate, Urethane		6
22	181-51S00-00	12PLASW	Liner Retainer Bushing		3
23	182-51S00-00	12PLANSW	Liner Retainer Nut		3
24	183-51S75-SS	PP6021260SW	Wear Plate, SS		3
25	See Chart		Liner Gasket		3
26	16-0258-P	1292083	Extension Rod		3
27	132-51C00-00	1292085	Rod Clamp Assembly		6
28	202-1701	80701038	Hex Head Capscrew, 7/8-9 X 3.50 LG		12
29	202-008		Spring Lock Washer, 7/8"		12
30	1200120	80701089	Water Spray Pipe		3
31	131-51C00-00	1292146	Sub Rod		3
32	130-51C15-00	1292147	Piston Rod C/W Nut		3
33	170-14A06-01	6308241	Nut, Piston Rod	1000	3
34	301-0006		O-Ring, Piston Rod Seal		3
35	See Chart		Piston		3
36	3N9-2338	99609573	Discharge Manifold Seal		3

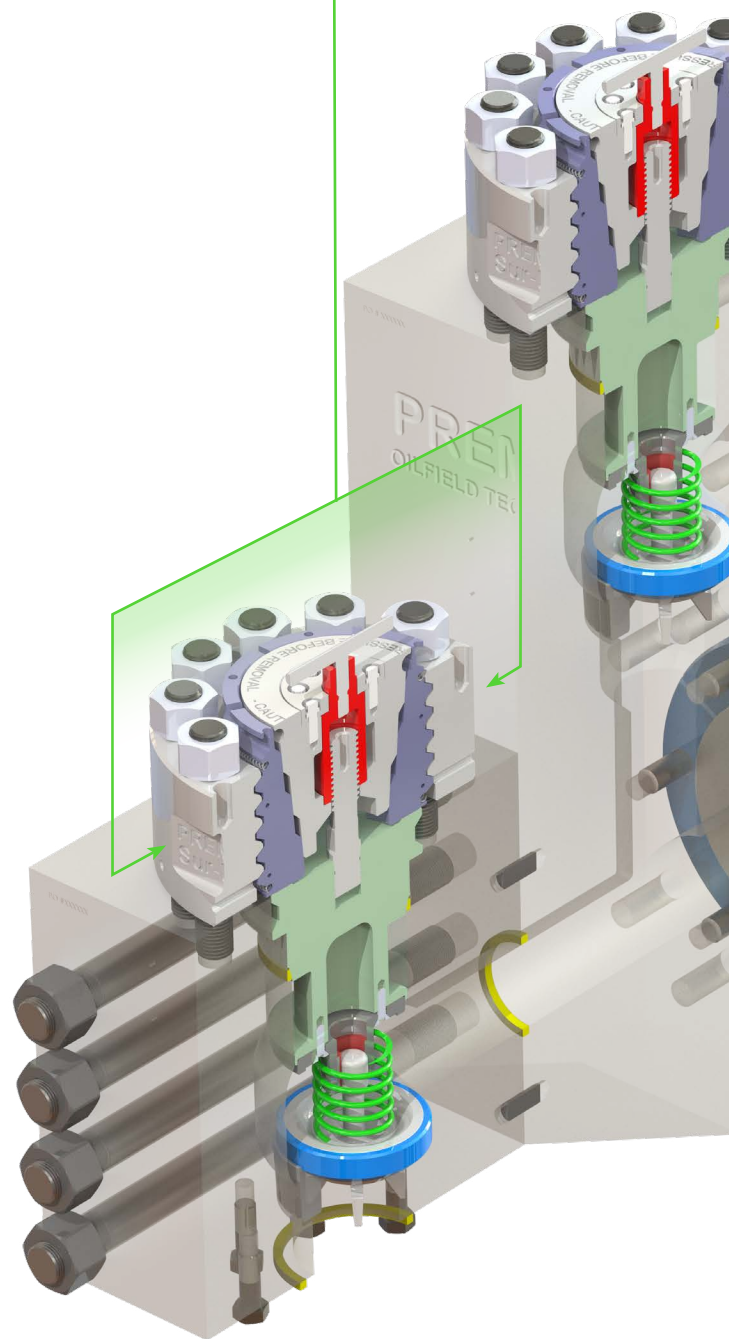
Recommended torque type expressed in foot-pounds with use of moly grease

QUICK CHANGE DRILLING TECHNOLOGIES

Sur-Lock® Valve Cover

Save time and **eliminate the unsafe practices of using cheater pipes and sledge hammers** to tighten and loosen valve covers. In current practice, one rig hand will hold a pipe in the valve cover holes and another will swing a large sledge hammer at the pipe in order to loosen or tighten the assembly.

The Sur-Lock® Valve Cover system eliminates this unsafe practice and radically decreases the time it takes to remove valve covers, and replace valves and seats. **Sur-Lock requires no special tooling** and weighs about the same as a conventional valve cover assembly. **With the use of an impact wrench or just a torque wrench, the valve cover can be removed and replaced with minimal safety risk.**



Caliber® MXL-7500

12-P-160 Mission L Compatible
7500 psi Two-Piece Fluid End

SUR-LOCK

HAMMERLESS™
TECHNOLOGY



Sur-Lock® Rod Link

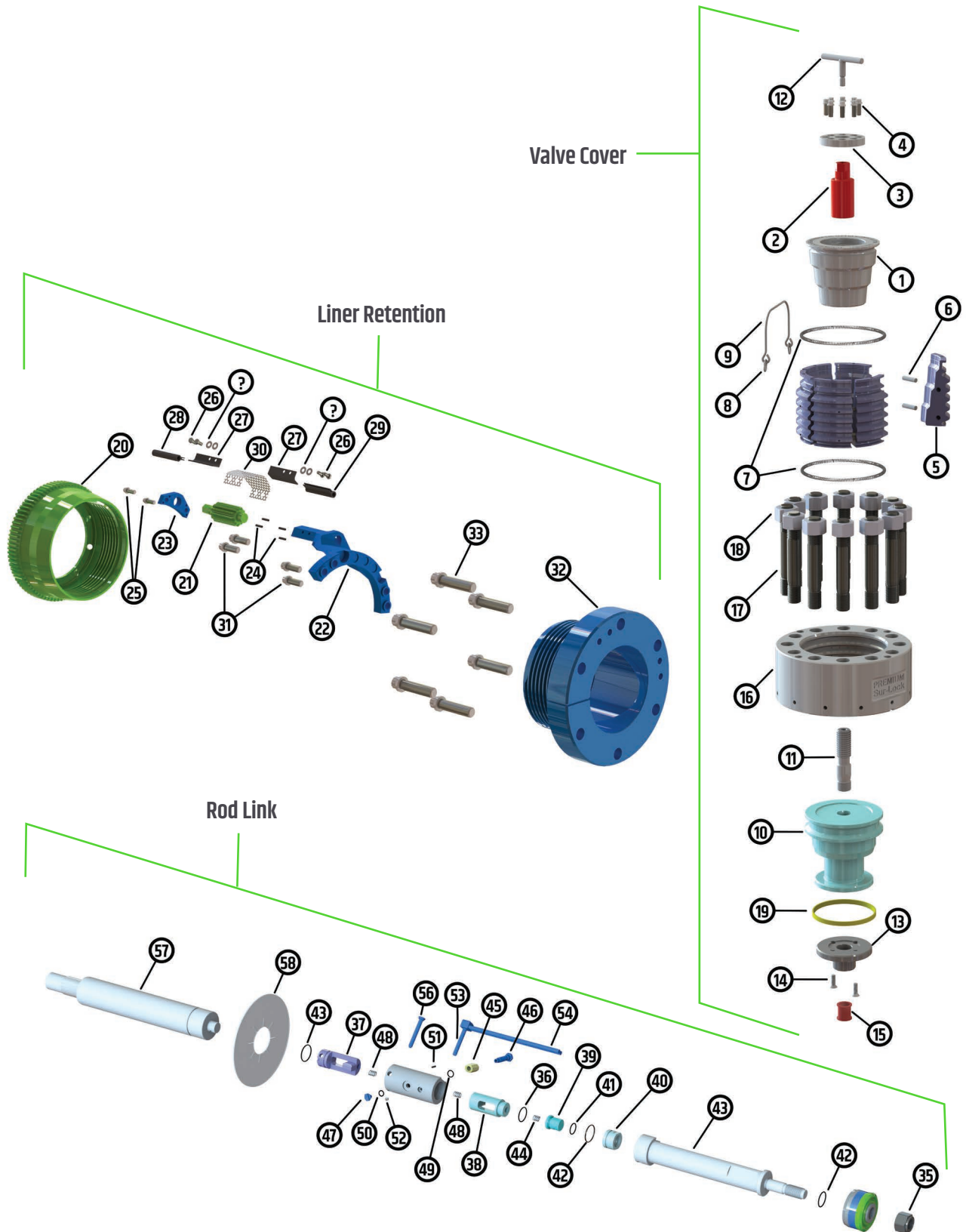
Save time and reduce failure points by eliminating the need for a hydraulic pump. **With our proprietary “taper lock” mechanism you simply use a standard wrench to unload the pins for removal.**

Our low profile water jet design can be used on pistons 4.5” and up. This system is fully interchangeable with P-Quip’s Rod Link System allowing you to effortlessly replace only the sub rod in “plug & play” fashion.

Sur-Lock® Liner Retainer

Designed to drastically reduce the amount of time it takes to change a liner, the Sur-Lock® Liner Retainer **eliminates the need for hammers** to generate the necessary torque required by integrating a torque multiplying pinion and bull gear into a conventional liner retention system. **We also reduced the weight of our liner nut to make change-outs safer and easier. The time to install a liner and tighten to the required torque is reduced to 45 seconds.**

SUR-LOCK™ MODULE COMPONENTS



MODULE COMPONENTS

Item No.	Part Number	Part Description	Qty. Per Pump
Sur-Lock Valve Cover Assembly			
	627-0080	Sur-Lock Valve Cover Assembly	6
	627-0191	Locking Cone Assembly (Items 1-4)	6
1	627-0186	Locking Cone	6
2	627-0025	Cone Nut	6
3	627-0026	Nut Retainer	6
4	204-843	12pt Cap Screw .500-13	48
	627-0189	Segment Assembly (Items 5-9)	6
5	627-0185	Locking Segments (Set Of 6)	6
6	601-0043	Dowel Pin .500 Dia. X 1.500l	72
7	601-0048	Extension Spring .375 Dia.	12
8	601-0082	Connector Link	12
9	627-0193	Handle	6
	627-0083	Valve Cover Assembly (Items 10-15)	6
10	627-0082	Valve Cover	6
11	627-0022	Stud, Valve Cover	6
12	627-0036	T-Handle	6
	154-51500-00	Valve Guide Assembly (Items 13-15)	6
13	154-51500-01	Body, Valve Guide	6
14	170-04B13-07	FHCS 1/2-13 X 1.500 Long	12
15	206-44U07-00	Insert, Valve Guide	6
16	627-0060	Ring Flange	6
17	170-14A06-09S	Stud 1.500-6 X 10.000 LG	72
18	170-14A06-00	Nut 1.500-6	72
19	204-01U19-00	Seal, Valve Cover (P-119)	6
Sur-Lock Liner Retention Assembly			
20	629-0075	Liner Nut	3
	629-0076	Pinion Bracket Assy (Items 21-30)	3
21	629-0079	Pinion	3
22	629-0077	Bracket	3
23	629-0078	Retainer	3
24	601-0121	Spring Pin, 420ss, .250 X 1.000LG	12
25	204-841	12pt Screw, .500-13unc X 1.000LG	6
26	202-419	Hex Head, .375-16unc X .750LG	12
27	629-0109	Plate, Side Guards	6
28	629-0080	Guard Angle, Left Side	3
29	629-0081	Guard Angle, Right Side	3
30	629-0082	Pinion Guard	3
31	204-1269	12pt Screw, .750-10unc X 2.000LG	12
32	629-0083	Liner Bushing	3
33	170-11B07-06	12pt Screw, 1.125-7unc X 4.5"LG	18

Item No.	Part Number	Part Description	Qty. Per Pump
Sur-Lock Rod Link Assembly			
	628-0073	Piston Rod C/W Nut (Items 34-35)	3
34	628-0072	Piston Rod	3
35	211-027	Nylon Nut, 1.5-6unc	3
	628-0054-N	Sub Rod Assembly W/ Pins (Items 36-52)	3
36	628-0047	Housing	3
37	628-0048	Female Coupling	3
	628-0049	Male Coupling Sub-Assembly (Items 38-44)	3
38	628-0050	Body, Male Coupling	3
39	628-0051	Nose, Male Coupling	3
40	628-0052	Collar, Male Coupling	3
41	3N7-2220	2-220 O-Ring, NBR 70 Duro	3
42	3N7-2228	2-228 O-Ring, NBR 70 Duro	3
43	3N9-2225	2-225 O-Ring, NBR 90 Duro	3
44	601-0052	Spring, 3/4" OD X 1.00 LG	3
45	628-0025	Wedge Block	3
46	628-0151	Lock Screw	3
47	628-0152	Lock Screw Retainer	3
48	601-0052	Spring, 3/4" OD X 1.00 LG	3
49	3N7-2211	2-211 O-Ring, NBR 70 Duro	3
50	3N7-2208	2-208 O-Ring, NBR 70 Duro	3
51	601-0113	Spring Pin, 1/4" X 7/8" LG, SS	3
52	601-0009	Grease Fitting, 1/8 NPT	3
	628-0057	Water Jet Assembly (Items 53-55)	3
53	628-0028	Water Jet Block	3
54	628-0056	Water Jet Tube 1/4 NPT	6
55	601-0306	Fitting 1/2 NPT X 1/2 JIC	3
56a	628-0031	Pin, Standard 5" & Up	6
56b	628-0032	Pin, Low Profile, 4.5" & Up	3
57	628-0074	Extension Rod	3
58	628-0077	Splash Shield	3

Since 2003, Premium Oilfield Technologies has been supplying quality products to the oil and gas industry.

Our core focus is to provide performance enhancing solutions that meet the strictest safety standards. We have developed, tested, and enhanced mud pump components, top drives, mud valves, RCD/MPD systems, shaker screens, and other drilling products that decrease downtime, improve safety, and perform in the toughest drilling environments.

Premium Oilfield Technologies has worldwide locations and operations in all of the U.S. major shale plays. Our field locations boast a crew of experienced technical sales representatives that visit each rig several times per month. Geographic positioning allows us to directly supply our products to more than 500 drilling rigs every day.

- ◆ Industry standard, fully interchangeable parts and systems
- ◆ Performance-enhancing hammerless technology
- ◆ Time saving safety enhancements
- ◆ Field-based rig site technical support
- ◆ Managed rig site inventory 24/7/365
- ◆ Strict onsite testing and quality assurance





**NO
TIME
FOR
DOWN
TIME**

CORPORATE

Premium Oilfield Technologies - USA

10600 W. Sam Houston Pkwy. North
Houston, TX 77064
T: +1 281.670.5200

MANUFACTURING & REPAIR

Premium Drilling Equipment and Support

9841 Windmill Park Ln.
Houston, TX 77064
T: +1 281.670.5200

Patriot and Urethane

10600 W. Sam Houston Pkwy. N.
Houston, TX 77064
T: +1 281.670.5228

West Texas Operations All Divisions

10207 West Industrial Ave.
Midland, TX 79706
T: +1 432.563.2328

Patriot Screens

4602 S. MacArthur Blvd.
Oklahoma City, OK 73179
T: +1 405.470.6553

Canada Operations All Divisions

107-6704-41 Street
Leduc, Alberta
Canada T9E 0Z4
T: +1 877.593.0034

FIELD SALES, SERVICES AND REPAIR OFFICES

California / Colorado / Louisiana / New Mexico / North Dakota / Oklahoma / Pennsylvania / Texas / Utah / Wyoming

INTERNATIONAL

KUWAIT

Premium Oilfield Technologies
P.O. Box 721
Yarmouk, Kuwait 72658
T: +965 99679126
T: +965 66022296

UAE

Premium Oilfield Technologies Trading LLC
P.O. Box 89561
Dubai, UAE
T: +971 55 889 7210
T: +971 56 986 3834

INDIA

PMR Mud Riggers India Private Limited
S-Block-232, MIDC
Bhosari, Pune MH 411026
India

UAE

Premium Oilfield Technologies FZE Top Drive Solutions
S700, PLOT S30229
Jebel Ali Free Zone (South)
P.O. Box 262263
Dubai, UAE
T: +971 4 889 4897
T: +971 506587570

SAUDI ARABIA

Premium Mud Pumps Trading Est.
P.O. Box 956
Dammam, KSA
Postal Code: 31951
T: +966 50 0157516

UAE

Premium Oilfield Technologies FZE Mud Pump Solutions
S700, PLOT S30229
Jebel Ali Free Zone (South)
P.O. Box 262263
Dubai, UAE
T: +971 4 889 4897
T: +971 558897210



Premium Oilfield Technologies
Q1-3977
ISO 9001:2015
Certificate Number: 5028



sales@premiumoilfield.com
premiumoilfield.com

121124

SUR-LOCK

CALIBER

TRU-FLOW

PATRIOT™



LOGAN
Power Swivel