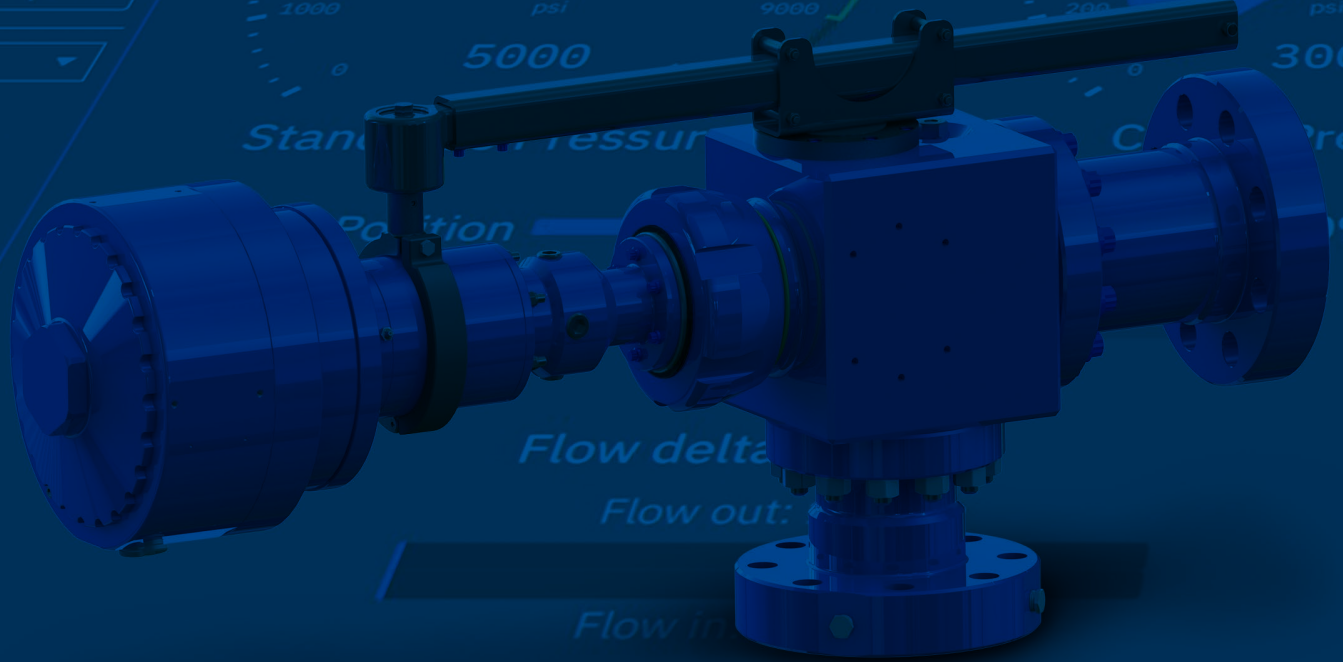


RCD/MPD Solutions



Choke A Position
 Current position 57.0%
 << < 57 > >>
 Full Close Full Open

Choke B



The Most Economical
 and Accurate
 Set-Point Pressure
 Control for Your Well

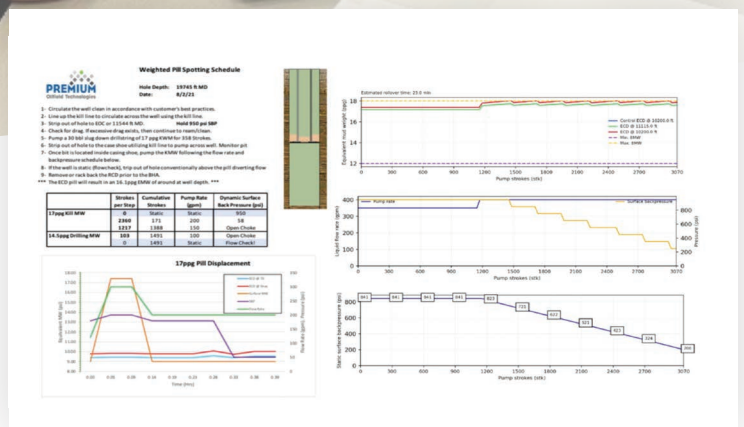
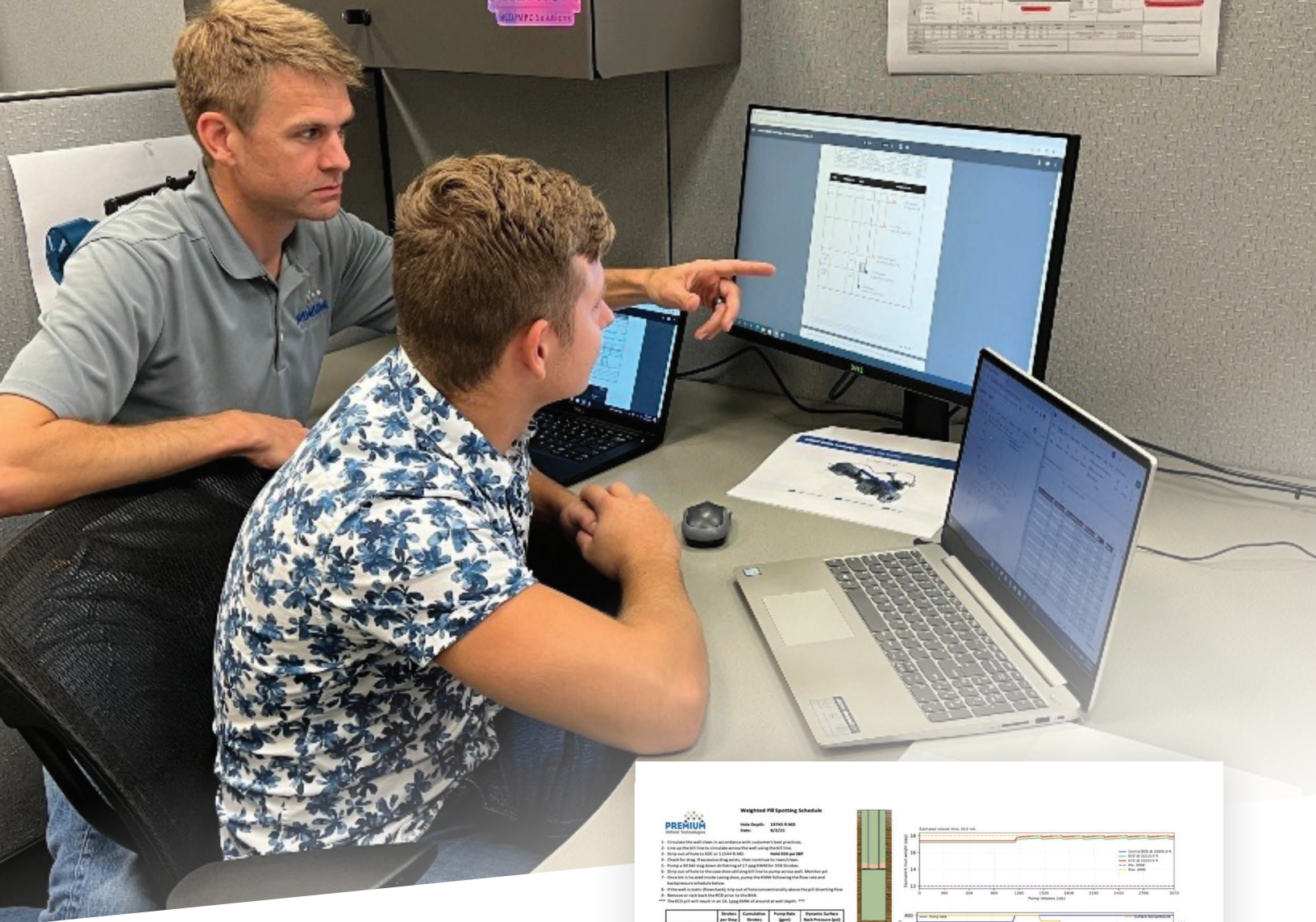
Tru-Flow™ MPD Systems

Set-Point Pressure Control

- Either choke or quarter-turn valve can automatically maintain set-point pressure input by user, thus automatically holding back-pressure
- Easy to operate software, no on-site engineer required
- Create custom ramp schedules to adjust for changing flow rates
- Smaller footprint – requires just choke, HMI, and cables
- Very accurate control of surface back pressure
- Competitive pricing, even compared to non-automated systems

Purpose Built for MPD

- **Cost:** Competitive pricing, designed for drill crew operation, reduced POB, less equipment
- **Safety:** Closed loop system, eliminate ballooning, maintain constant BHP, mitigate and control influxes
- **Efficiency:** Reduced NPT, lighter mud weights, increased ROP, eliminate casing strings
- **Control:** Drill through narrow drilling windows, depleted formations, & HPHT environments, maintain wellbore stability, reduced ECD systems



Tailored Engineered Solutions

Planning

- Premium Oilfield Technologies can provide a tailored engineered solution, utilizing experienced engineering professionals to provide the customer with advice on the successful deployment and utilization of MPD on their well.
- Premium can assist in the selection and provision of a tailored equipment solution as well as advice on the optimal form of MPD designed to meet the customer's specific needs.
- Training is key to the successful implementation of MPD. Premium offers offsite and onsite training to familiarize field and office staff with the equipment, processes and procedures to successfully operate MPD on any well.

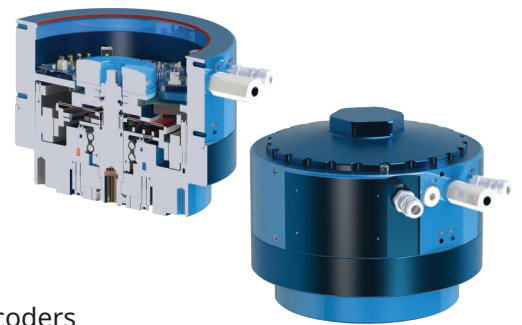
Operational Assistance

- Premium can provide onsite technicians and supervisors to assist with the MPD operation as well as detailed procedures on how to operate the system in a safe and effective manner.
- Premium offers both onsite and offsite engineering assistance with tasks such as drilling, ramp schedules, spotting pills, displacing pills, stripping under pressure and MPD cementing operations.

Sur-Tork EX Actuators

Sur-Tork EX Actuator

- Utilizes a high torque and fully integrated servo drive system to achieve the most precise movement in the industry
- Autonomous internal system provides unmatched resolution and control through its integrated pressure control algorithm that analyzes active torque data
- Acts as a brain for multiple devices and offers optional connections, eliminating the need for additional power, communications and encoders

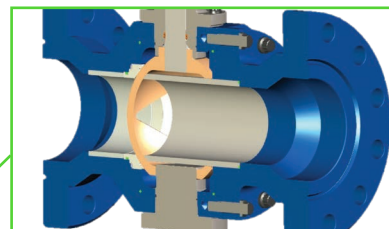
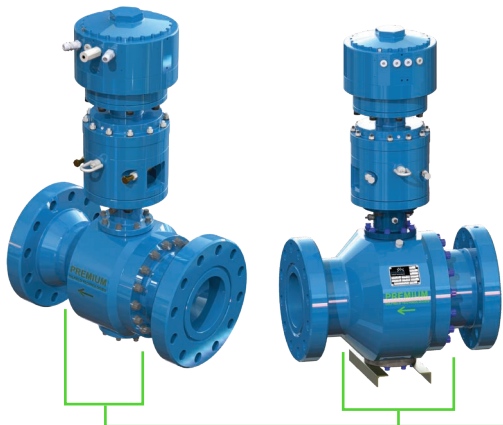


Power supply	90-240V <10 Amps @ 120V	Angular resolution	10 Arc seconds
EX rating	C-UL: CL,I, DIV 1, GP. C & D, T4 EN/IEC 60079-0: Ex d IIB T4	Temp range	-40 to 150°F
Connection	ISO F25/0.750" coupling	Communication protocols	Ethernet
Torque	20Nm continuous, 60Nm peak	Analog communication	Qty 4: 4-20mA analog loops for local connectivity to transmitters and instruments
Speed	Up to 320 RPM-Continuous Duty Cycle		

Sur-Tork EX Quarter Turn Valve

- World's first and only quarter-turn valve capable of set-point pressure control, with the industry's fastest and most precise control
- Rugged design and high-torque output ensure continuous duty and provide the user with optional connections, eliminating the need for multiple boxes and devices.
- Paired with a MP-680 or MP-880 Control Valve, the Sur-Tork EX operator is a simple and elegant solution for maintaining back pressure when connected directly to the RCD outlet.

MP-680 & MP-880 Control Valve Specifications		
Valve Type	6" Control Valve	8" Control Valve
Dimensions	L=29.12", H=49.5" with actuator mounted	L=29.12", H=52.7" with actuator mounted
Flange Type & PSI Rating	9" 3K API flange, 3000psi static, 200psi dynamic	
Weight	Valve 1065 lbs, with gear & actuator 1470 lbs	Valve 1275 lbs, with gear & actuator 1680 lbs
Ball Type	6" segmented ball, 60deg v or full bore	8" segmented ball, 60deg v or full bore
Gear Torque with RTM-20N Sur-TORK Actuator	6400 ft/lbs peak 2000 ft/lbs continuous modulating (6 seconds open-close @ 230V)	
Backlash	10 arc minutes	8 arc minutes
Interface	ISO 5211 F16	
Shaft Size	2.00" x 1/2" sq key	2.50" x 5/8" sq key



Tru-Flow™ Products

Tru-Flow MPD Choke

- Designed specifically for MPD applications offering the finest control in the modern oilfield
- Small footprint design allows for easier handling while the connection options provide maximum flexibility
- Best-in-class trim design ensuring precise control and allowing for the passing of large cuttings while in operation
- Sur-Tork EX precision electric servo actuators come standard on all Tru-Flow chokes, giving the user additional connection options for valves and sensors



Inlet	4-1/16" 5K	Debris passage	1.75" maximum
Pressure rating	3000 psi	Temp range	-40 to 250°F
Outlet	4-1/16" 5K	Actuator	Electric – Class I Div 1 fully integrated Servo Motor, drive, encoder, torque sensor, pressure transmitter, 10 Arc sec resolution, 90-240V AC single phase 10A, ethernet connectivity -40 to 150°F
Trim size	3.00" maximum		
Travel	3.00" maximum	Actuator speed	Open-close time = 3 Sec (220V)

Tru-Flow™ MPD Mini Skid

Purpose built for MPD, allowing for fast and safe installation
Small footprint for quick integration while providing the benefits of a full MPD system.

- Isolation valves for the quick maintenance of the choke

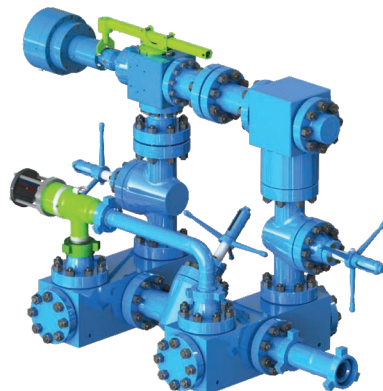


Choke Manifold	4" 3000 psi rated electric choke and 2x isolation valves	Temp range	-40 to 250°F
Choke trim size	3.00" maximum	Actuator	Electric - Class I Div 1 fully integrated Servo Motor, drive, encoder, torque sensor, pressure transmitter, 10 Arc sec resolution, 90-240V AC single phase 10A, ethernet connectivity -40 to 150°F
Choke trim travel	3.00" maximum		
Debris passage	1.75" maximum	Actuator speed	Open-close time = 3 Sec (220V)
Dimensions	58" x 84" x 55"	Weight	3900lbs

Tru-Flow™ Products

Tru-Flow™ MPD Single Leg Choke Manifold

- Small footprint manifold designed for simple rig integration
- Single choke leg upgradeable to a second choke and Coriolis meter
- EX Rated – Class I, Div 1, 90-240 VAC low amp power supply
- Functionalities include static position, pressure or ramp schedule mode (automated connection schedule)
- Integrated pop-off for overpressure protection



Skid dimensions	8' long x 4' wide x 6' tall	Debris passage	1.75" maximum
Pressure rating	3000 psi	Temp range	-40 – 250°F
Inlet/outlet Flanges	4" Fig' 602	Actuator	Electric – Class I Div 1 Fully integrated servo motor, drive, encoder, torque sensor, pressure transmitter, 10 Arc sec resolution. 90-240V AC single phase 10A, ethernet connectivity -40 to 150°F
Choke trim size	3.00" maximum	Actuation speed	Open – close = 3 sec (220V)
Choke Leg	3" 3000 psi MPD chokes with electric actuation	PRV	Integrated pop off valve included for overpressure protection

Tru-Flow MPD Dual Leg MPD Manifold

- Small footprint manifold designed for simple rig integration
- Dual choke leg manifold for redundancy with option for Coriolis meter
- EX Rated – Class I, Div 1, 90-240 VAC low amp power supply
- Functionalities include static position, pressure or ramp schedule mode (automated connection schedule)
- Second choke can be operated as a pressure relief valve for overpressure protection

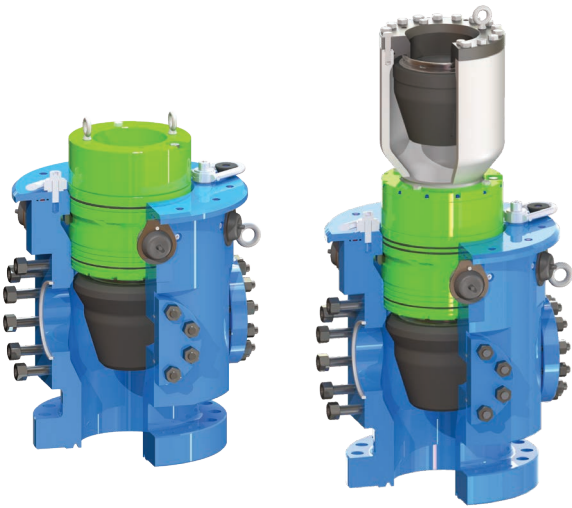


Skid dimensions	8' long x 4' wide x 6' tall	Debris passage	1.75" maximum
Pressure rating	3000 psi	Temp range	-40 – 250°F
Inlet/outlet flanges	4" Fig' 602	Actuator	Electric – Class I Div 1 fully integrated servo motor, drive, encoder, torque sensor, pressure transmitter, 10 arc sec resolution. 90-240V AC single phase 10A, ethernet connectivity -40 to 150°F
Choke trim size	3.00" maximum	Actuation speed	Open – Close = 3 Sec (220V)
Choke Leg	3" 3000 psi MPD chokes with electric actuation	PRV	Second choke leg can be configured as a pressure relief choke

RCD Products

RCD Model T-3000

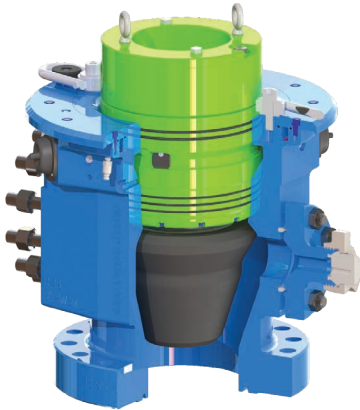
- Low profile RCD measuring 43" tall with bearing assembly installed
- High pressure – 3000 psi static / 1800 psi @ 100 rpm
- Hands-free bearing latch system – no HPU required
- Self-lubricated – sealed bearing assemblies with oil level inspection port
- 9" pass through for up to 6-5/8" drillpipe
- Rated for up to 220 RPM
- Quick change sealing element system
- Single or dual element bearing offerings



Dimensions	Low profile – 43" OAL with bearing assembly	Latching mechanism	Fail safe closed - hydraulic latch (no HPU required)
Pressure Rating	3000 psi static, 1800 psi dynamic	Bottom flange	13-5/8" 5K or 11" 5K
RPM Rating	220 rpm max	Outlet flanges	(2) 4-1/16" 5K, 7-1/16" 3K, 9" 3K
Bearing Lubrication	Self lubricated bearing – integrated reservoir	Sealing elements	Single or dual elements – nitrile, polyurethane – slip on style

RCD Model T-2000

- Low profile RCD measuring 33.25" tall with bearing assembly installed
- High pressure – 2000 psi static / 1200 psi @ 100 rpm
- Hands-free bearing latch system – no HPU required
- Self-lubricated – sealed-bearing assemblies with oil level inspection port
- 9" pass through for up to 6-5/8" drillpipe
- Rated for up to 220 rpm
- Quick change sealing element system



Dimensions	Lowest profile – 33.25" OAL with bearing assembly	Latching mechanism	Fail safe closed - hydraulic latch (no HPU required)
Pressure rating	2000 psi static, 1200 psi dynamic	Bottom flange	13-5/8" 5K
RPM rating	220 rpm max	Outlet flanges	4-1/16" 5K, 9" 2K
Bearing lubrication	Self lubricated bearing – integrated reservoir	Sealing elements	Single element – nitrile, polyurethane – slip on style

CORPORATE

Premium Oilfield Technologies - USA

10600 W. Sam Houston Pkwy. North
Houston, TX 77064
T: +1 281.670.5200

USA MANUFACTURING & REPAIR

Patriot and Urethane

10600 W. Sam Houston Pkwy. North
Houston, TX 77064
T: +1 281.670.5228

Premium Drilling Equipment and Support

9841 Windmill Park Ln.
Houston, TX 77064
T: +1 281.670.5200

Well Service Solutions and Equipment

2904 SCR 1250
Midland, TX 79706
T: +1 432.563.2338

West Texas Operations - All Divisions

10207 West Industrial Ave.
Midland, TX 79706
T: +1 432.332.3651

Patriot Screens

4602 S. MacArthur Blvd.
Oklahoma City, OK 73179
T: +1 405.470.6553

NORTH AMERICA FIELD SALES, SERVICES AND REPAIR OFFICES

California / Colorado / Louisiana / New Mexico / North Dakota / Oklahoma / Pennsylvania / Texas / Utah
Wyoming / Leduc, Alberta

INTERNATIONAL

KUWAIT

Premium Oilfield Technologies

P.O. Box 721
Yarmouk, Kuwait 72658
T: +965 99679126
T: +965 66022296

UAE

Premium Oilfield Technologies Trading LLC

P.O. Box 89561
Dubai, UAE
T: +971 55 889 7210
T: +971 56 986 3834

INDIA

PMR Mud Riggers India Private Limited

21/17, D-1 Block, MIDC
Chinchwad, Pune MH 411019
India

UAE

Premium Oilfield Technologies FZE Top Drive Solutions

S700, PLOT S30229
Jebel Ali Free Zone (South)
P.O. Box 262263
Dubai, UAE
T: +971 4 889 4897
T: +971 506587570

SAUDI ARABIA

Premium Mud Pumps Trading Est.

P.O. Box 956
Dammam, KSA
Postal Code: 31951
T: +966 50 0157516

UAE

Premium Oilfield Technologies FZE Mud Pump Solutions

S700, PLOT S30229
Jebel Ali Free Zone (South)
P.O. Box 262263
Dubai, UAE
T: +971 4 889 4897
T: +971 558897210



Premium Oilfield
Technologies
Q1-3977



sales@premiumoilfield.com
premiumoilfield.com